

Level 3 Seattle Gateway

Facility Overview

The Seattle Gateway provides premium space built with connectivity to Level 3's premier network and the networks of numerous carriers.

Space

- 47,779 sq. ft. total space
- 34,250 sq. ft. raised floor space
- Cabinets and Suites available
- Ceiling height clearance: 8' 6"
- Raised floors with structural capacity of 300 lbs./sq. ft.
- Three-tiered overhead ladder racking
- Zone 4 Seismic Code Construction

Power

- N+1 electrical design and distribution, including redundant UPS and battery backup
- Automatic Transfer Switches ensure smooth transition to backup power
- 24-hour back-up generator – enough capacity to power more than 2,242 homes
- 99.999% power availability
- At least 125 watts/sq. ft. of primary breaker power (with the ability to upgrade)

Environmental Controls

- Temperature of 72 degrees +/- 6 degrees
- Humidity at 50% +/- 10%
- Dry-piped, double-interlocked, pre-action fire protection system

Support

- Technical support available 24 x 7

Facility Security

Because the Gateway supports both the Level 3 Network and our customer's colocation needs, Level 3 manages a stringent multi-layered security control procedure.

- 24 x 7 security monitoring
- Biometric Palm Scan and Photo ID access cards required to enter colocation area
- 24 x 7 Closed-Circuit Video Monitoring and Logging with backup tape storage



Seattle Gateway

Facility Networking Features

The Seattle Gateway provides easy access to Level 3's premier broadband network.

Connectivity

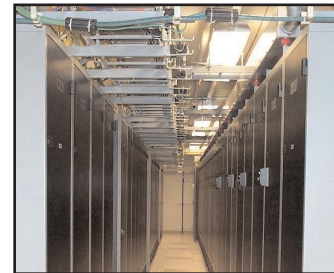
- True diverse fiber entrances
- CLLI code of STTNWAHO
- NPA-NXX of 206-223

Services Available

- Internet Access Service
- Frame Relay/ATM Services
- Hosted Voice Services
- Metro and Intercity Private Line Services
- Metro and (3)FlexSM Ethernet Services
- Metro and Intercity Wavelength Services
- Metro and Intercity Dark Fiber Services

Alternate Carriers in the Facility

- AT&T Local
- Qwest
- ELI
- WorldCom Local
- Looking Glass Networks
- XO Communications



Seattle Colocation Area



Seattle Gateway:
1000 Denny Way, Seattle, WA 98109 (4th Floor)